

# COMMUNITY WORKSHOP: BIKEWAYS PLANNING CONNECTING THE CANAL AND SERVICE ROAD



SAND HILL SCHOOL, 16 DEWEY AVENUE

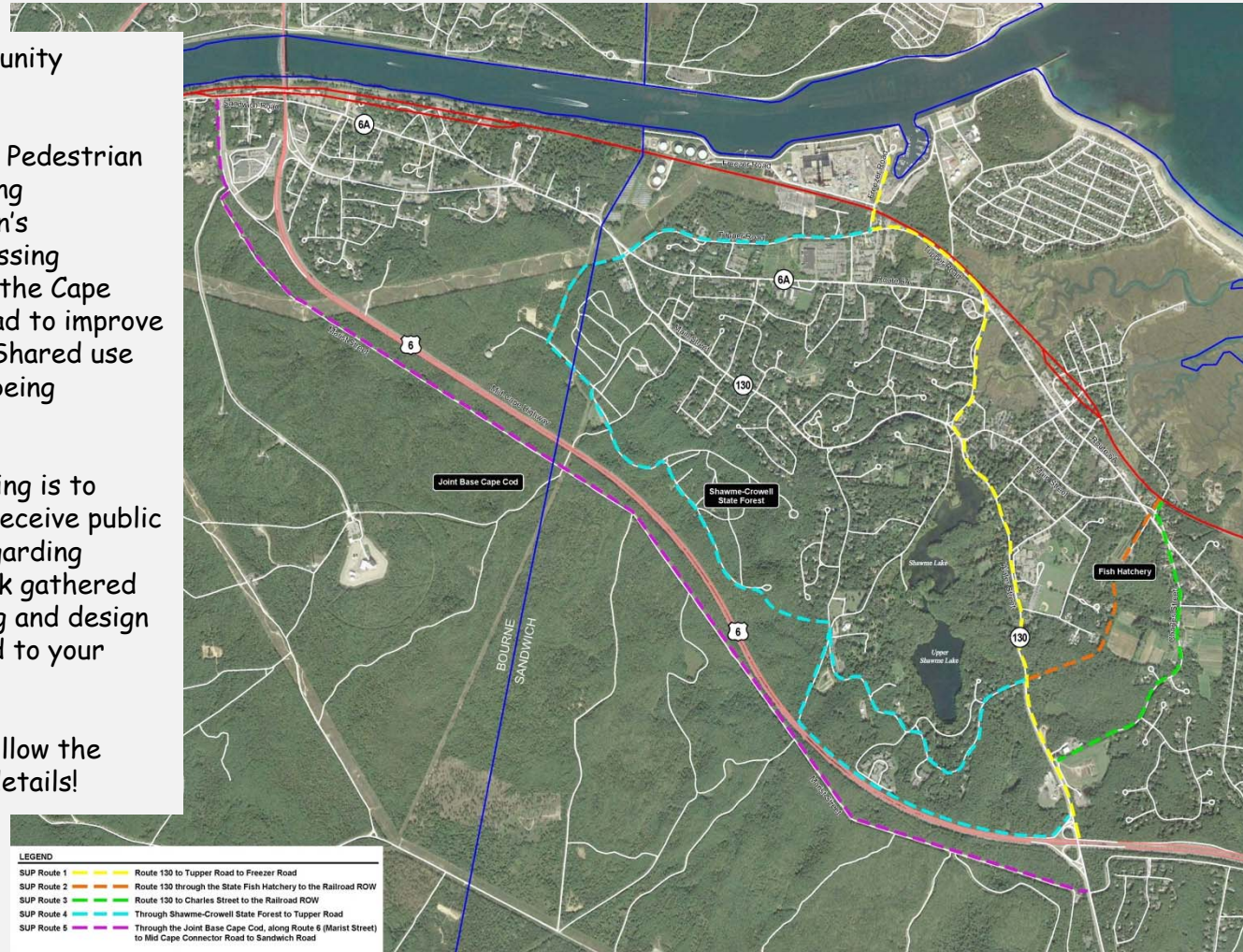
MONDAY, JANUARY 10, 2022, 6:00 PM - 7:00 PM

You are invited to a community workshop!

The Sandwich Bikeways & Pedestrian Committee, the Engineering Department, and the Town's consultant, VHB, are assessing potential routes between the Cape Cod Canal and Service Road to improve bicycle accommodations. Shared use paths and bike lanes are being considered.

The purpose of this meeting is to present information and receive public comments & questions regarding potential routes. Feedback gathered will inform future planning and design efforts. We look forward to your participation and input.

A brief web survey will follow the meeting. Stay tuned for details!



LEGEND	
SUP Route 1	Route 130 to Tupper Road to Freezer Road
SUP Route 2	Route 130 through the State Fish Hatchery to the Railroad ROW
SUP Route 3	Route 130 to Charles Street to the Railroad ROW
SUP Route 4	Through Shawme-Crowell State Forest to Tupper Road
SUP Route 5	Through the Joint Base Cape Cod, along Route 6 (Marist Street) to Mid Cape Connector Road to Sandwich Road

Source: Google Earth



0 500 1000 2000 Feet